



## Installing a fresh copy of Windows 10

The below information will provide step by step instructions of installing a complete fresh version of Windows 10. Please read all instructions first as it is important they are carried out in the correct order.

Please be aware that all data on your Operating System (OS) SSD will be removed, so please make sure that any data you need to save is backed up on another drive.

Step 1 – Disconnect the SATA data or power cable from all but the OS drive. If your OS is installed onto a M.2 drive, just disconnect all other drives. This will prevent you accidentally installing Windows onto any other drive apart from the OS drive.

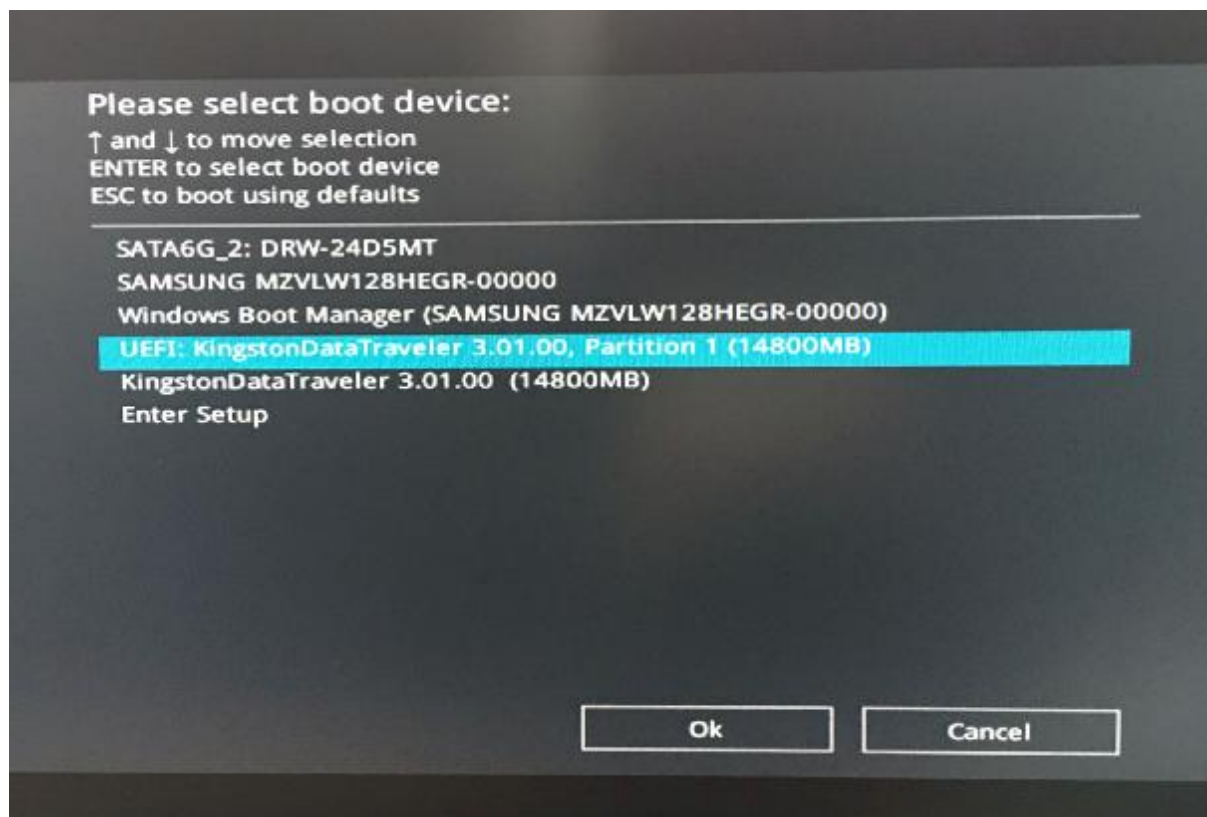
Step 2 - Insert the recovery USB drive into a spare USB port.

Step 3 – Boot to the USB drive.

To do this switch your PC on and then press repeatedly one of the following keys depending on the manufacturer of your motherboard until you see an image that looks similar to the below.

ASUS – F8  
Gigabyte – F12  
Intel – F10  
ASRock – F11

You will then see an image that should look something like the below. Choose the option that indicates the USB drive. The UEFI version must be selected.



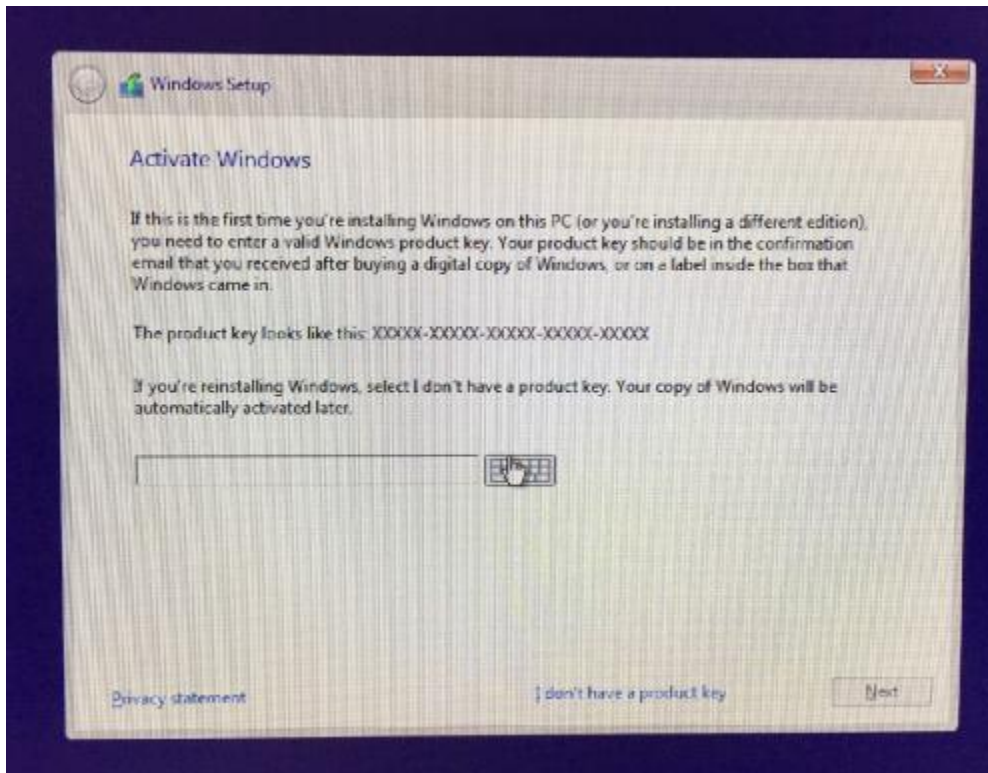
Step 4 – Enter your language and other preferences.



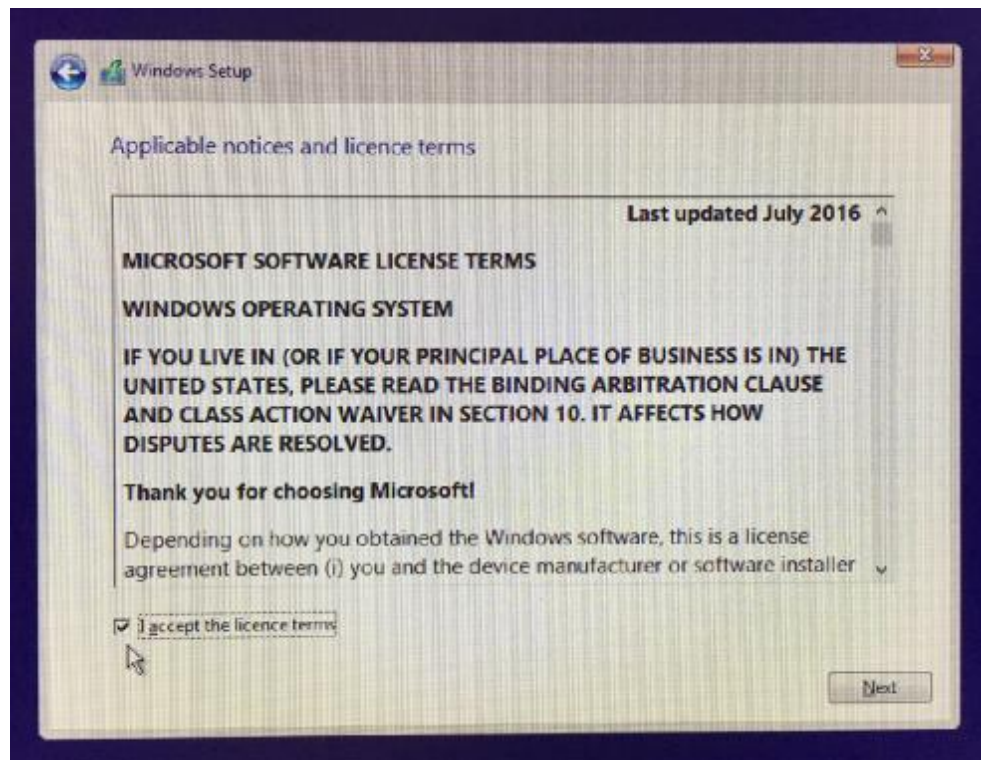
Step 5 – Click Install now



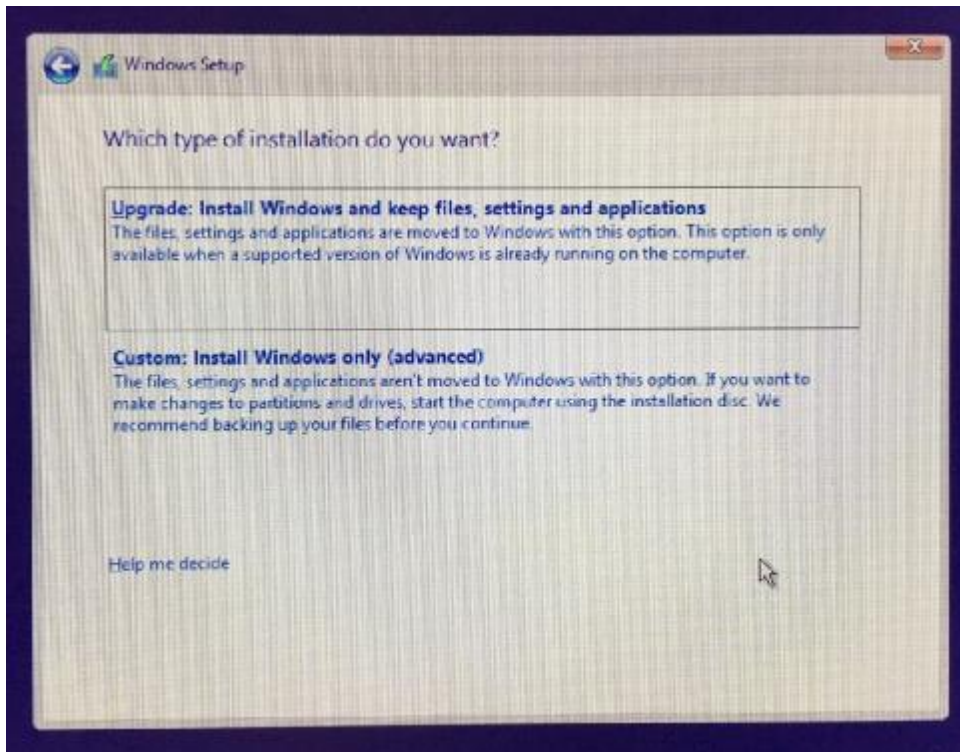
Step 6 – Active Windows – Type in your Windows 10 product key or choose “I don’t have a product key” to do it later.



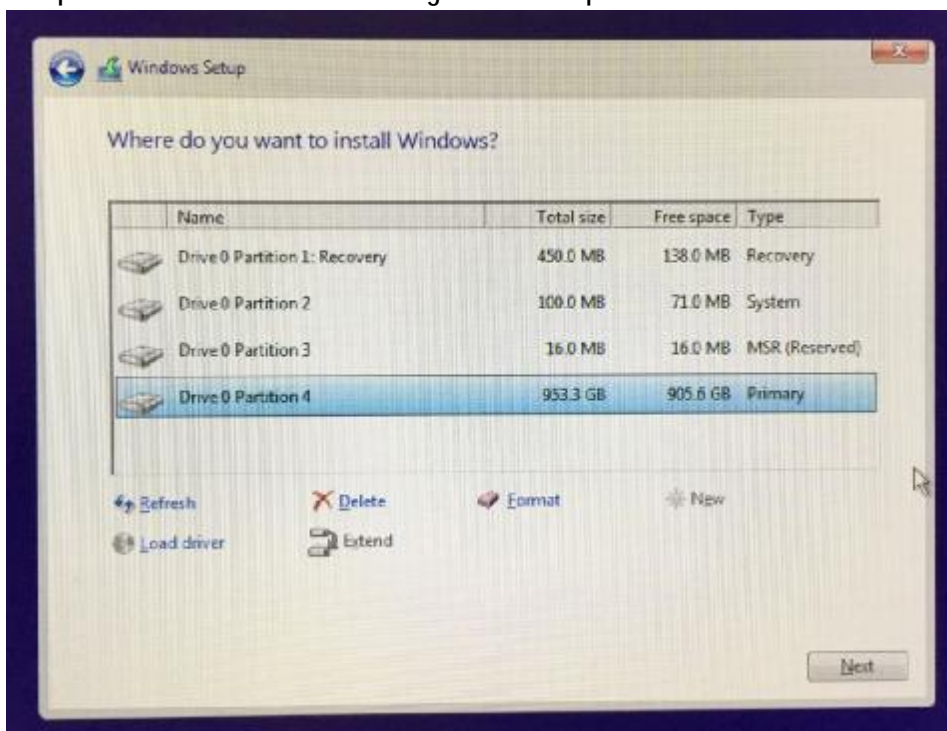
Step 7 – Accept terms



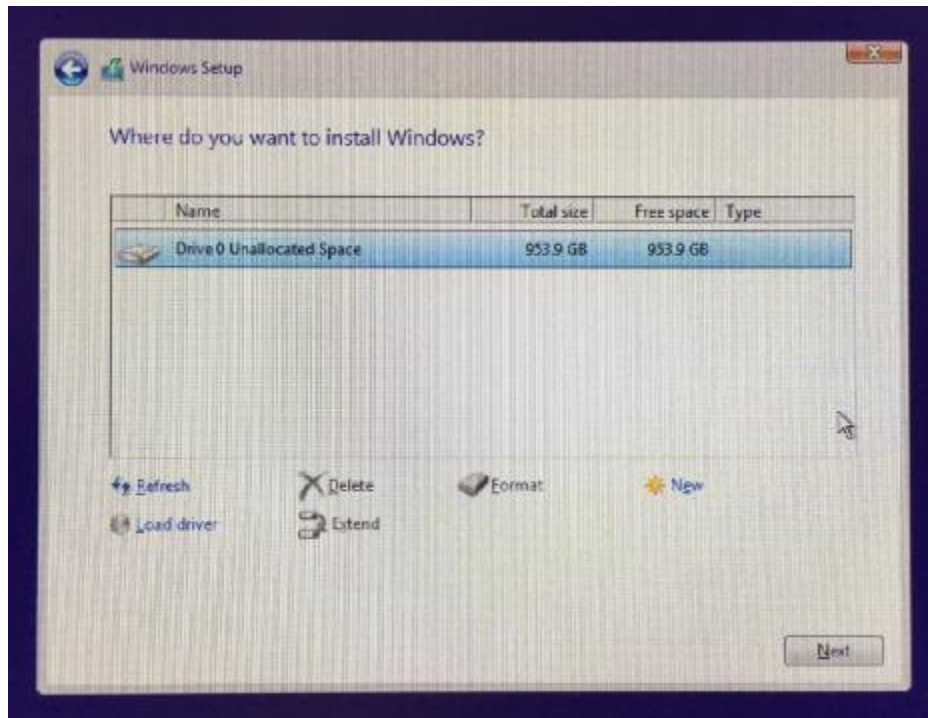
Step 8 – Type of Installation – It is important Custom install is chosen at this point. This will install a clean version of Windows 10 and remove all other files from the OS drive.



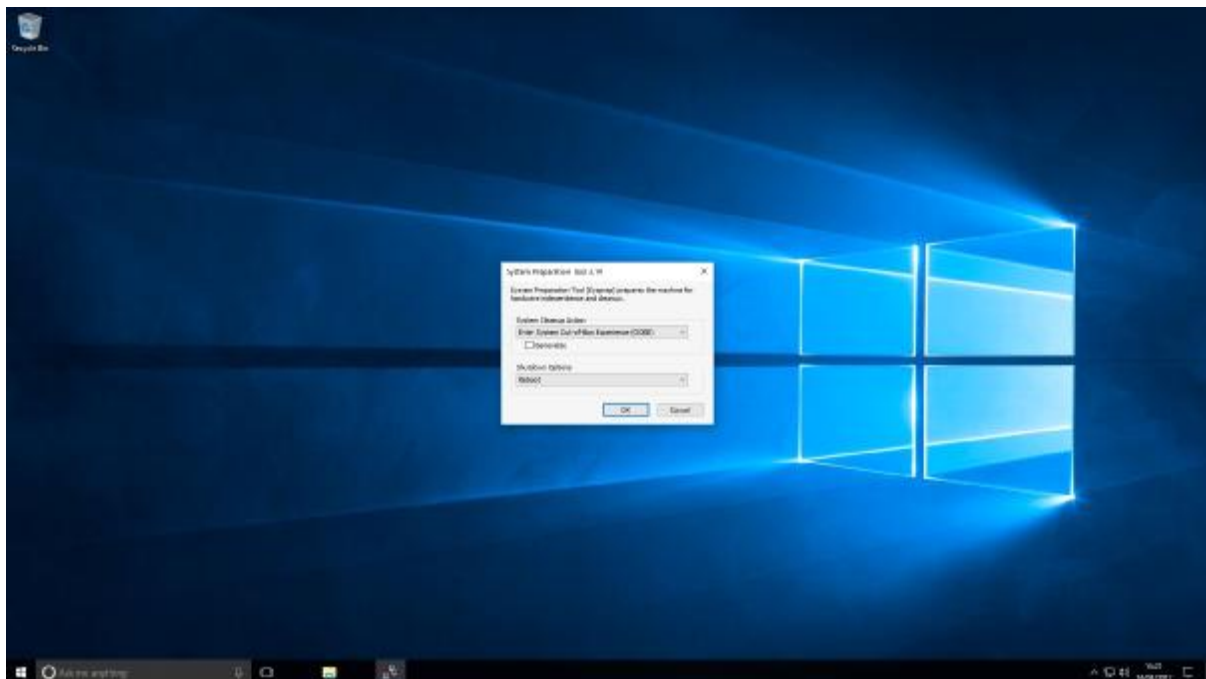
Step 9 – Delete all old partitions – Select each partition and click delete. Notice that in the image below the OS drive is indicated as Drive 0. If you have more than one drive shown here then you have not disconnected all non OS drives as mentioned in step 1. If that is the case, close this window and power down the PC and start again from Step 1.



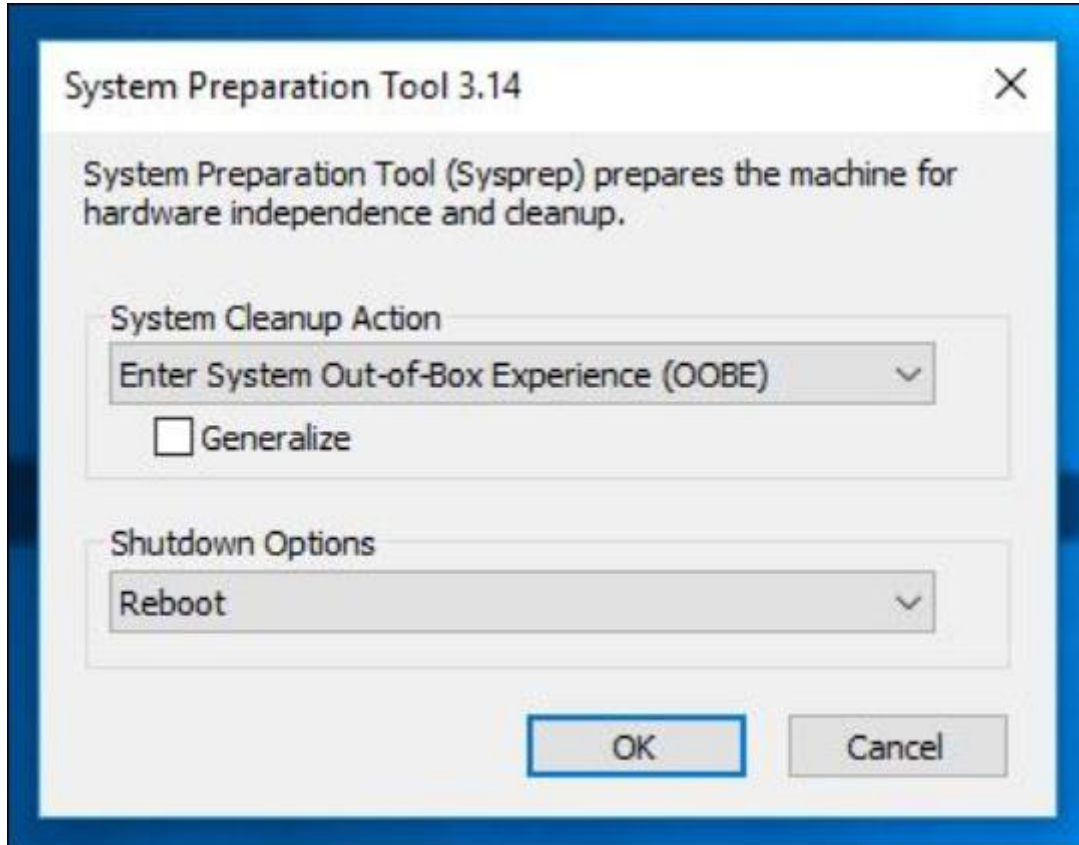
Once all partitions have been deleted you should be presented with an image like the below. Click next.



Step 10 – Windows will now install. The process will take around 10-15 mins and your PC will reboot a number of times. Once complete you should be presented with a screen that looks like this.



Step 11 – On the window called System Preparation make sure all options are as shown as below and click OK. The PC will then reboot where you will go through the account setup process, which is the same process you went through when you first switched on the PC.



Step 12 – Once the account setup process is complete and your PC has booted into windows you may need to install some drivers for any additional components that have been installed, for example a graphics or TV card.

Below are a few links that will help you find them a little quicker.

Nvidia graphics card - <http://www.nvidia.co.uk/Download/index.aspx?lang=en-uk>

TBS TV card - <http://www.tbsdtv.com/download/>

Creative sound card - <http://support.creative.com/>

Asus sound card - <https://www.asus.com/uk/support/>

Step 13 – Shutdown the PC and reattach any hard drives/SSDs you previously disconnected. Your PC should now be set to factory defaults. Once your PC has rebooted we recommend running Windows update at this time to make it fully up to date. J