

## Monitor Stand Disassembly

1. Disassemble the base of monitor by unfastening bolt.



2. Unfasten four screws on the back cover.



3. Disassemble a bezel from the bottom of monitor. (Don't push too much force when disassembling)



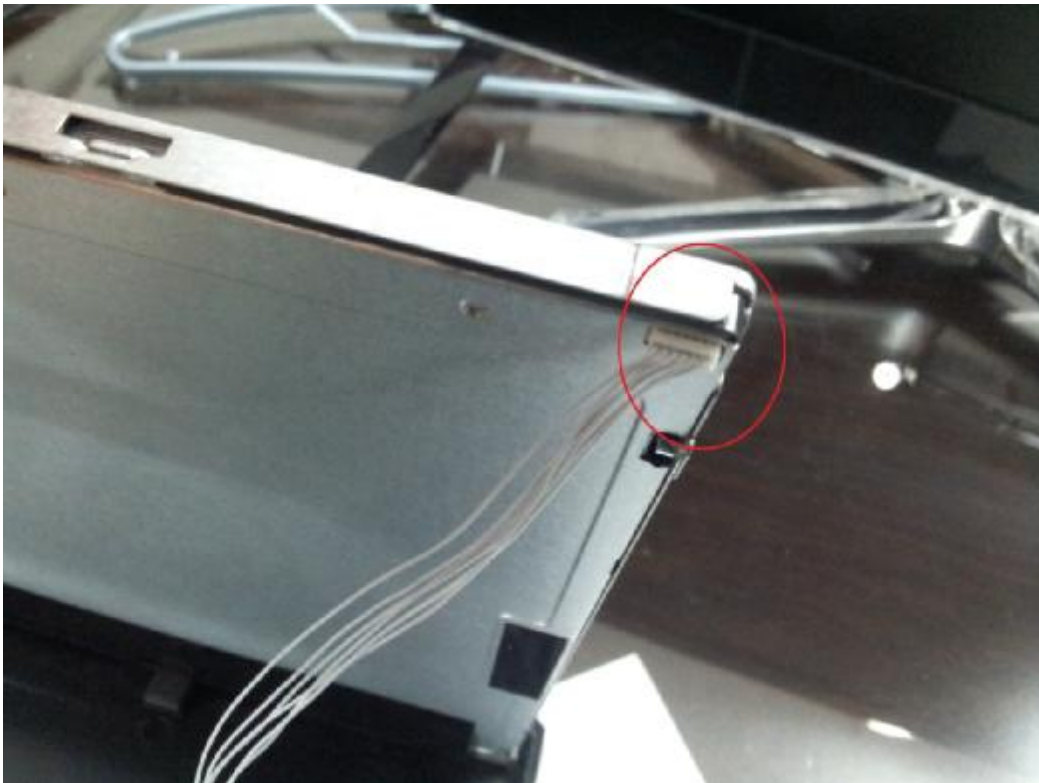
4. A plastic card will be useful.



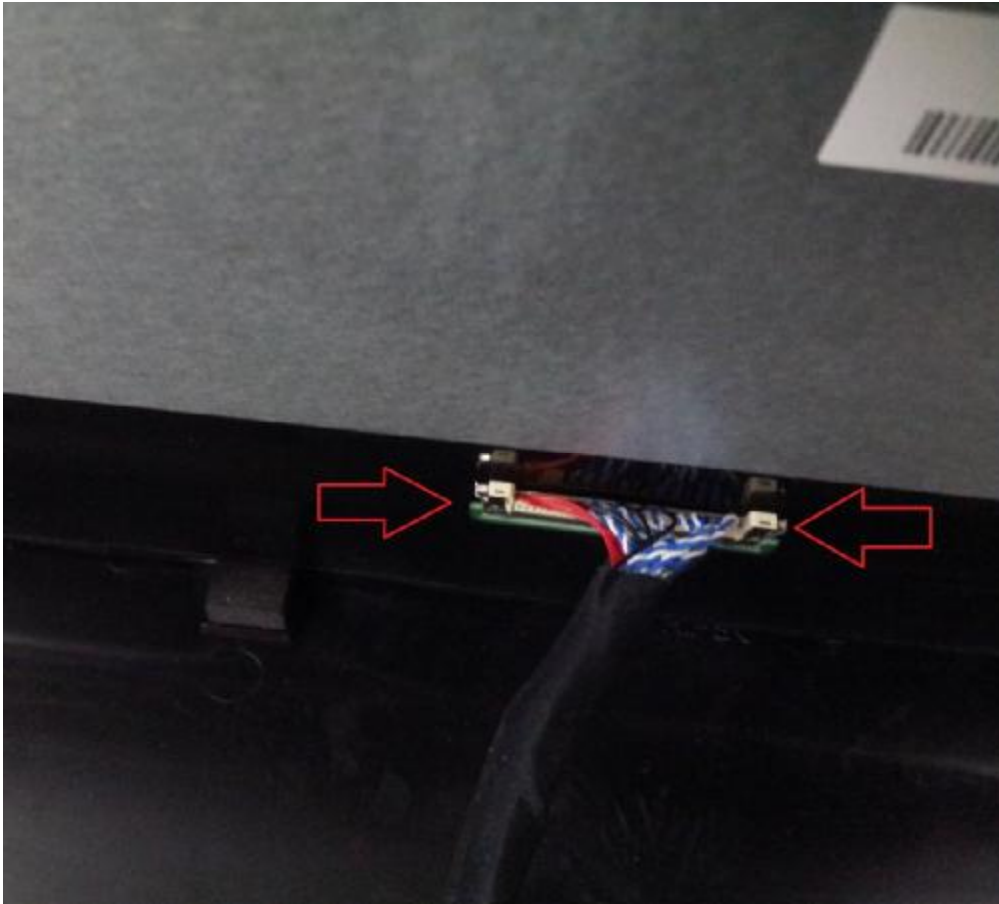
5. Insert plastic card between the gap and move it along with bezel. If you push too much force, a locking clip could be broken.



6. Take a cable for LED back light off from the panel.



7. Push the buttons on both sides of LVDS cables to remove it.

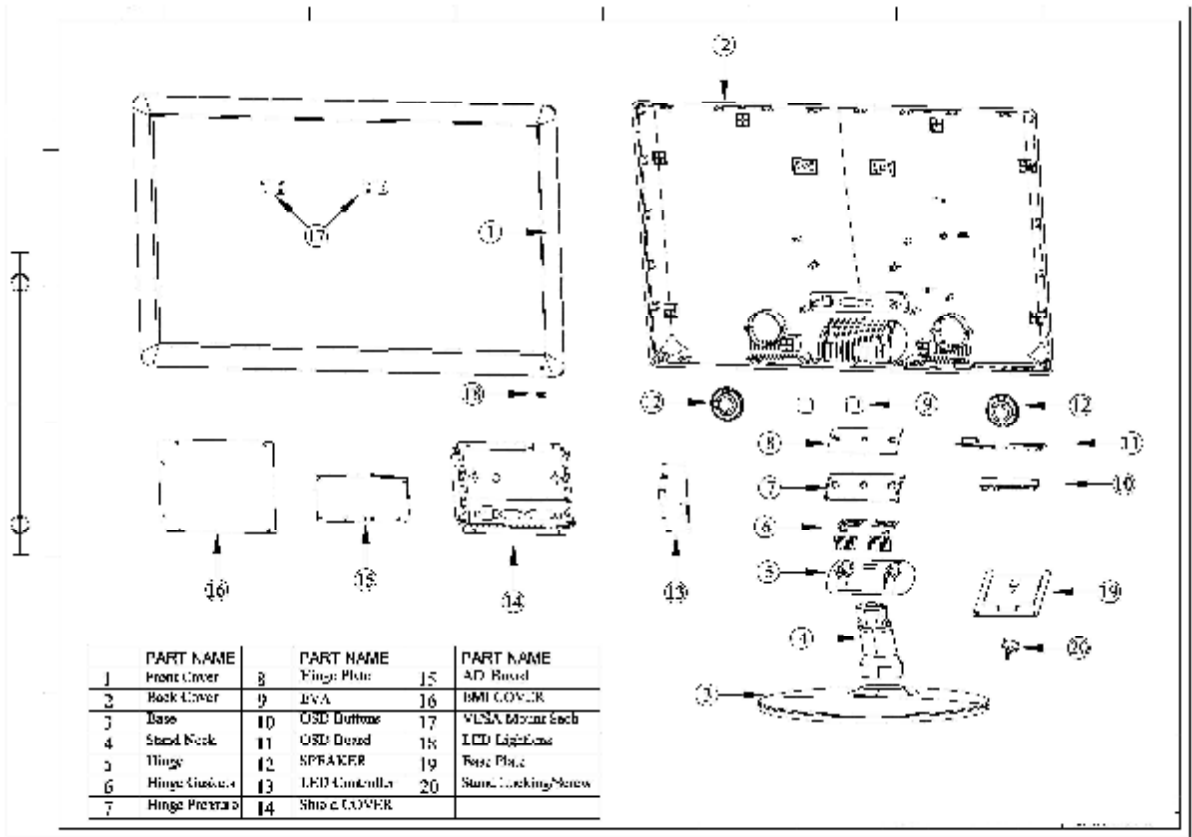


8. Unfasten two screws which are connected to back cover.



9. Stand neck disassembled.





PARTS LIST